



Beauty isn't created.
It's revealed.

NORDBERG
medical UNIQUE
SCIENCE

● Designed to regenerate

JULÄINE™
Of Sweden

Rediscover your skin's natural beauty

● Your face tells your story. Over time, your skin's natural renewal process slows and signs of aging appear. This is a normal process that is happening to all of us.



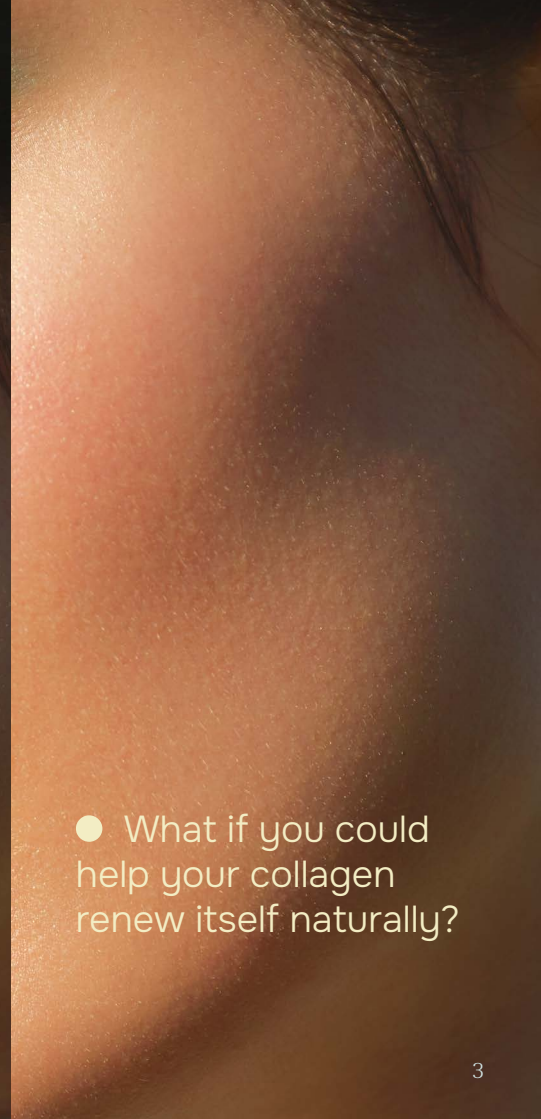
YOUNG SKIN
(20s)

AGEING SKIN
(40s)

MATURE SKIN
(60s)

WHAT IS HAPPENING WHEN WE AGE?¹

- Loss of support – the underlying structure of your skin shifts, causing a drooping appearance.
- Declining collagen production – skin loses firmness, elasticity and radiance.
- External factors – sun exposure, pollution and lifestyle choices can accelerate the aging process.
- Genetics – your unique DNA influences how your skin ages.



● What if you could help your collagen renew itself naturally?



● To maintain smooth skin and reduce wrinkles, it's essential to support the balanced production of natural collagen types.



The importance of collagen

During the aging process, the skin loses its elasticity and volume due to a significant decrease in collagen, elastin and hyaluronic acid.

THIS IS RESULTING IN THE FOLLOWING EFFECTS:

- Lines and wrinkles
- Loss of skin firmness
- A more fatigued appearance



COLLAGEN IS A KEY STRUCTURE THAT KEEPS YOUR SKIN SMOOTH, FIRM AND FULL OF LIFE.²

From the age of 25, its natural production slows down and continues to decrease by 1-2% every year.

Two key types of collagen – collagen type I and III – are essential for the maintenance of healthy and smooth looking skin:



Skin strength and structure



Elasticity and flexibility



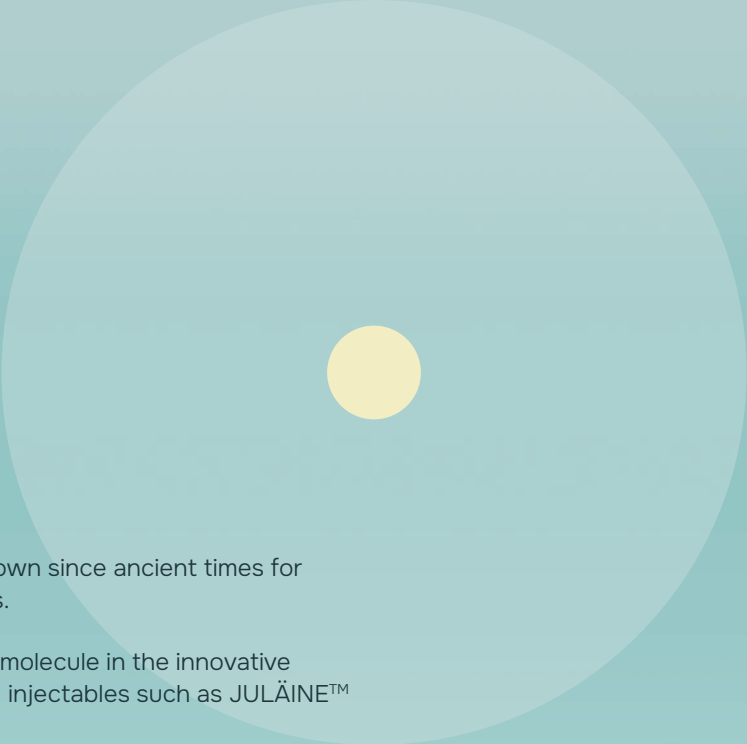
Softness and resilience

The power of lactic acid

WHAT IS LACTIC ACID?

Lactic acid is more than just a skincare ingredient – it is a powerful, naturally occurring compound that provides energy and support regeneration of tissues throughout the body.³

Not only does lactic acid stimulate collagen production to restore firmness, it also increases hydration and the elasticity of the skin.⁴



Lactic acid has been known since ancient times for its biostimulating effects.

Nowdays, it is a leading molecule in the innovative field of bio-regenerating injectables such as JULÄINE™ of Sweden.^{5,6}



JULÄINE™, a new
lactic acid based skin
bio-activator⁷



JULÄINE™ is designed to naturally regenerate the body's own collagen by providing physical signals, progressively offering long-lasting facial rejuvenation that feels authentic and real.¹⁰

THE JULÄINE™ FORMULA

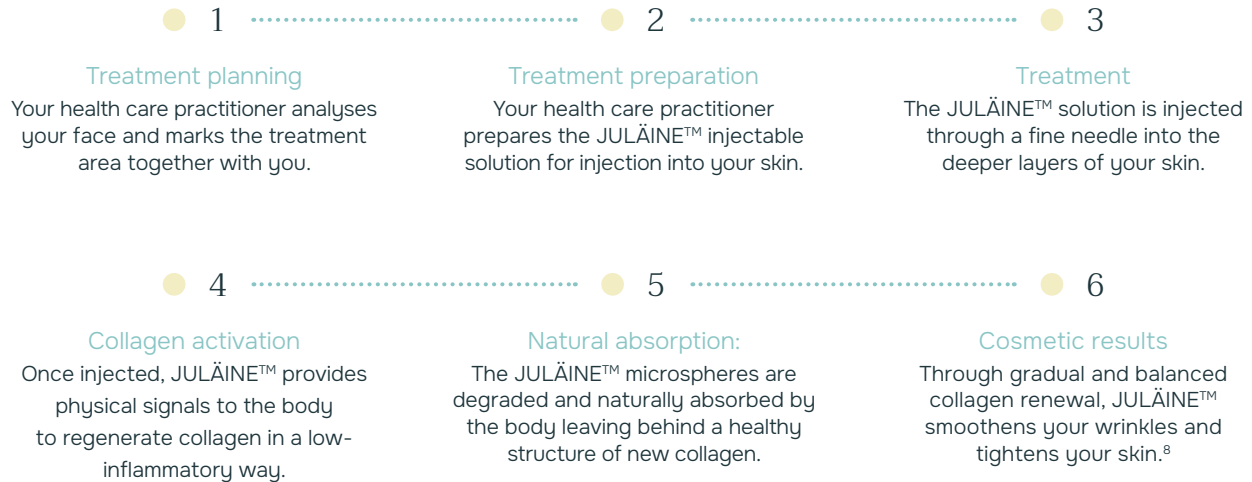
- Powered by the unique LASYNPRO™ technology, using uniform Lactic Acid microspheres that integrate smoothly into your skin.⁹
- Effectively smoothens wrinkles and tightens the skin.⁸
- Is biocompatible and biodegradable⁸ and has a strong safety profile¹⁰.



● JULÄINE™ is an injectable implant for adult immune-competent individuals and is intended for augmentation of shallow to deep nasolabial folds to compensate for skin depression due to connective tissue imperfections, scars, or for cosmetic purposes.

JULÄINE™ activates your collagen natural renewal^{7, 9, 10}

HOW DOES THE JULÄINE™ TREATMENT WORK?





● JULÄINE™ is an injectable that offers a quick and comfortable procedure with no downtime.¹⁰



● before

● after

JULÄINE™ offers natural results*

● before



● after



Results 2 months after 2nd session



Frequently asked questions

WHAT IS JULÄINE™?

JULÄINE™ is a CE marked injectable implant intended to be used in adult, immune-competent individuals to compensate skin depression due to connective tissue imperfections, scars or for cosmetic purposes.¹⁰

WHAT IS THE TREATMENT PLAN OF JULÄINE™?

The treatment plan consists of a maximum of 3 sessions of treatment, 2-4 weeks apart. Your aesthetic professional will be the one responsible for designing your treatment plan.¹⁰

WHAT ARE THE SIDE EFFECTS?

Possible side effects are related to the injection site including redness, short-term pain and short-term bleeding at the site of needle tip penetration during injection, which are generally relieved within a few days. For a more detailed list please read our complete safety information.¹⁰ In case of a side effect, please contact your health care provider without delay.

WHAT IS THE EXPECTED TIME FOR RESULTS?

Soon after treatment, your skin will improve in overall quality and glow. Cosmetic results appear progressively between 2 and 4 months after the treatment for the majority of patients.⁸

WHERE CAN I HAVE A JULÄINE TREATMENT DONE?

JULÄINE™ can be injected by a medical doctor or specialist. You can contact your cosmetic health care practitioner and ask about a JULÄINE treatment or visit www.julaineofsweden.com for more information.

IS JULÄINE™ A SAFE TREATMENT OPTION?

JULÄINE™ is a medical device and has duly been approved by the Health Authorities prior to making it available to health care providers. JULÄINE can only be injected by qualified and trained medical professionals. In clinical trials, the microsphere technology used in JULÄINE™ demonstrated a strong safety profile. For a detailed list of potential side effects, please read our complete safety information.¹⁰

● Designed to regenerate



JULÄINE™
Of Sweden

REFERENCES:

- 1 Swift A, Liew S, Weinkle S, Garcia JK, Silberberg MB. The Facial Aging Process From the “inside Out”. *Aesthet Surg J*. 2021 Sep 14;41(10):1107-1119.
- 2 Type I and III collagen content and fibre distribution in normal human skin during ageing. C.R. Lovell et al: *British Journal of Dermatology*, Volume 117, Issue 4, 1 October 1987, Pages 419–428.
- 3 2023. Zhu & Dong: Poly-L-Lactic Acid increases collagen gene expression and synthesis in cultured fibroblasts (HS68) through the TGF- β /Smad pathway. *J. Cosmetic Dermatology* 2023;22:1213–1219.
- 4 2023. Oh S. et al.: Poly-L-Lactic Acid fillers improved dermal collagen synthesis by modulating M2 macrophage polarization in aged animal skin. *Cells* 2023, 12, 1320.
- 5 2021. Lee: Lactate: a multifunctional signalling molecule. *Yeungnam University Journal of Medicine*, 38(3), pp. 183–193.
- 6 2017. Sun, S. et al.: Lactic acid: No longer an inert and end-product of glycolysis. *Physiology* (Bethesda, Md.), 32(6), pp. 453–463.
- 7 2025. Norberg Medical Data on file.
- 8 2025. Urdiales-Gálvez et al: Facial Rejuvenation With an Innovative Poly-l-Lactic Acid (Juläine) for Nasolabial Folds: Interim Data Analysis of a Prospective, Non-Randomized, Multicenter, Open-Label Spanish Study. *Journal of Cosmetic Dermatology*, 2025; 24:e70137
- 9 2025. PLLA medical device animal implantation study. Data on file.
- 10 2025. JULÄINE™ Instructions for Use: V4.

contact@nordbergmedical.com
www.nordbergmedical.com
social media @nordbergmedical

Nordberg Medical AB,
Hälsövägen 7, 14157 Huddinge
Sweden

CE-Certificate: 0653